



Inspiration of Design Concepts  
*Hotel operating equipment*



Our industry prides itself in creating guest experiences that are truly unique.  
Together, we inspire new spaces, new services and spearhead future trends.

Our collaborations with your groups, have not only captured the history  
of global hotel brands, they have cleverly crafted new experiences.

Take a look at some of the amazing projects that have got everyone talking...





# Retractable Bar with Media Screen



**Retractable Bar**  
900W x 1800L x 900H (mm)

58" LED Media Screen

Toughened Glass  
in front of screen



Medium Bronze  
Baked Enamel



Michelangelo  
Quartz Stone



Smoky Sapelle  
Laminate

Storage for glasses,  
alcohol & utensils

Sink

Glass Rack

Removeable  
Ice Bin Drawer

Storage drawer

Pull out Drawer for Sink Drainage  
with sink cover

Pull out Drawer for Rubbish Bin  
for internal bin



Video view: <http://www.ihsglobalalliance.com/crazycube-bar2>





Press for 3D View *(USE YOUR MOUSE TO ROTATE):*

[www.ihsglobalalliance.com/xr/FoldingAwning/FoldingAwning.html](http://www.ihsglobalalliance.com/xr/FoldingAwning/FoldingAwning.html)

# Folding Cool Cube

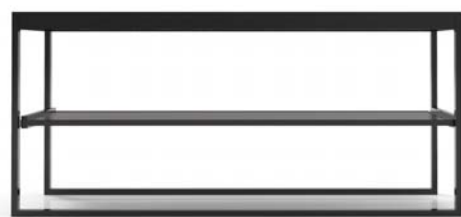
buffet & media tables



**WITHOUT WHEEL BASE**



**WITH WHEEL BASE**



**Front View**



**Side View**



**Front View**



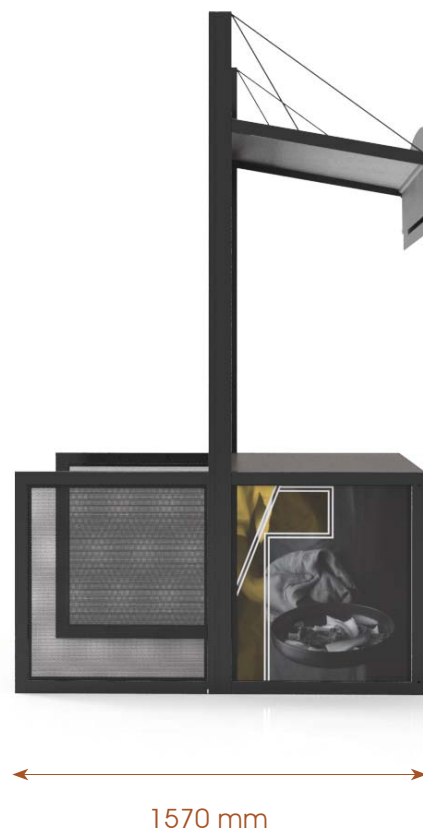
**Side View**

# Folding Cool Cube & Awning

*without wheel base*



Front View



Side View



Top View

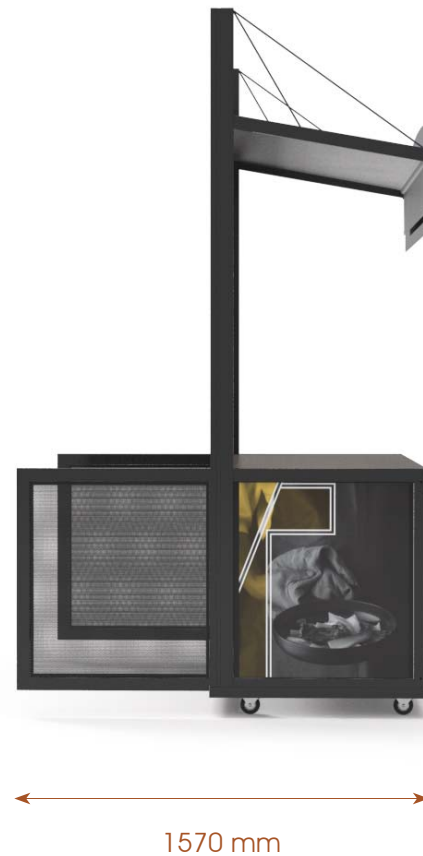


# Folding Cool Cube & Awning

*with wheel base*



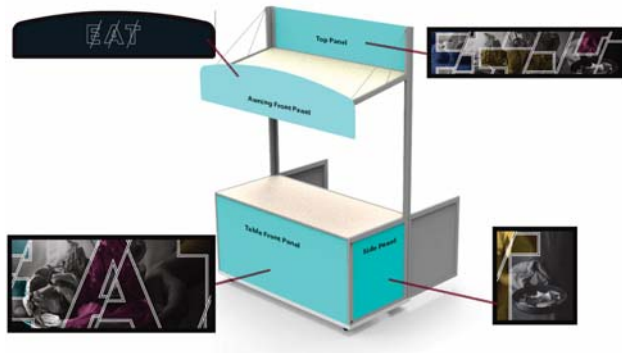
Front View



Side View

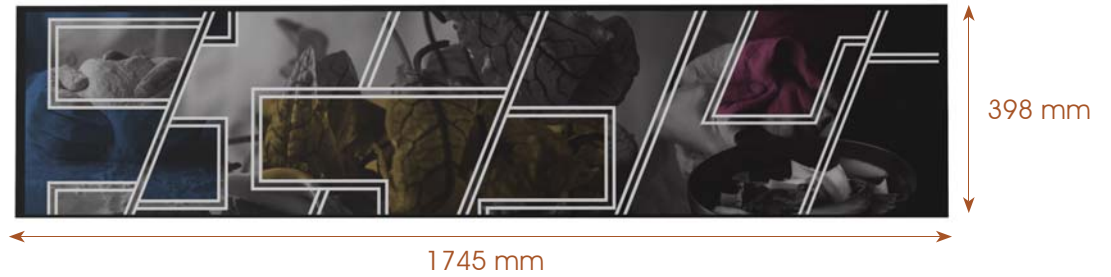


Top View



ARTWORK PANELS PLACEMENT

AWNING TOP PANEL



AWNING FRONT PANEL

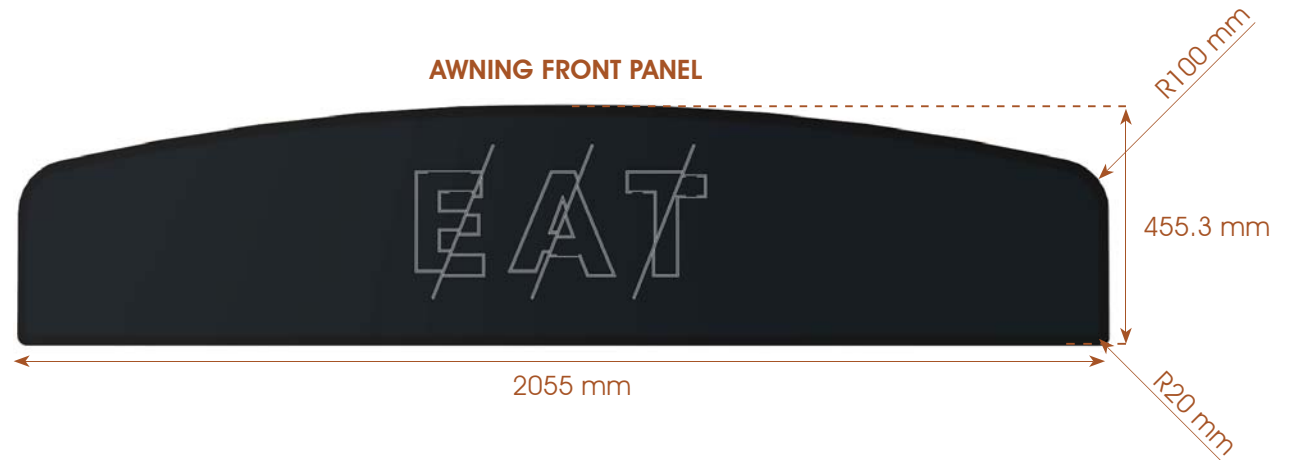


TABLE SIDE PANEL

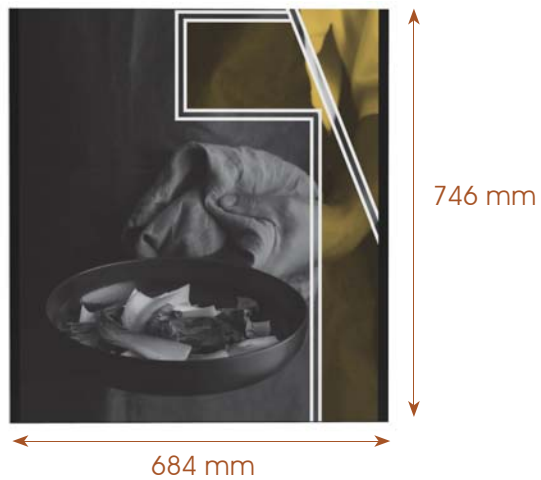
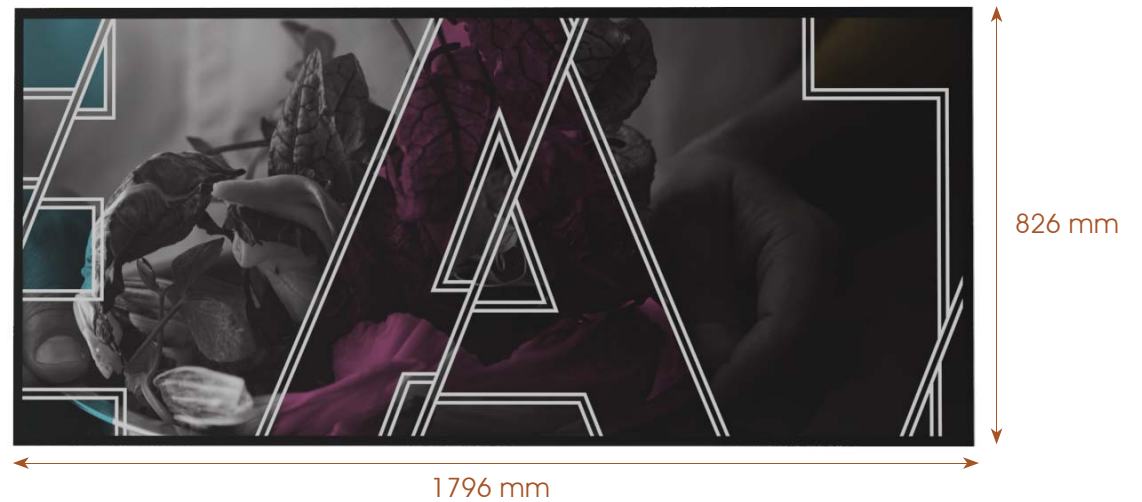


TABLE FRONT PANEL





Press for 3D View (use mouse to rotate the model):

[www.ihsglobalalliance.com/xr/CoolCubeFoldable/CoolCubeFoldable.html](http://www.ihsglobalalliance.com/xr/CoolCubeFoldable/CoolCubeFoldable.html)

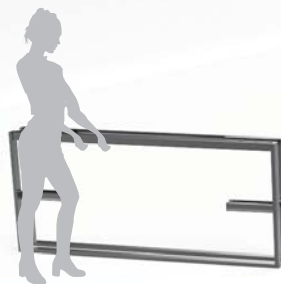


# Cool Cube Foldable

*buffet & live cooking*



**Efficient Storage**



**Foldable Frame**



**Effortless Set-up**

# Cool Cube Foldable

*interchangeable table*



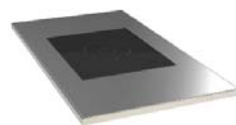
Insert Transport & Storage



Duck Stand



Carving



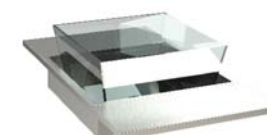
Induction Cooking



Induction Wok



Lava Grill



Acrylic Ice Well



Sushi Bar



Teppanyaki



Induction Holding



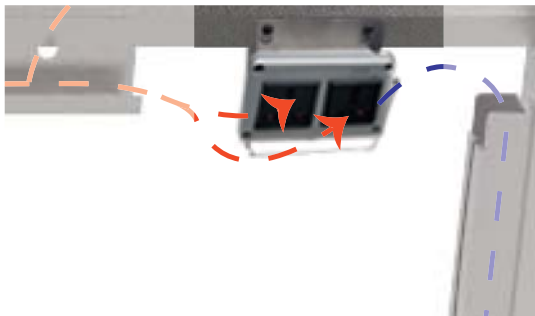
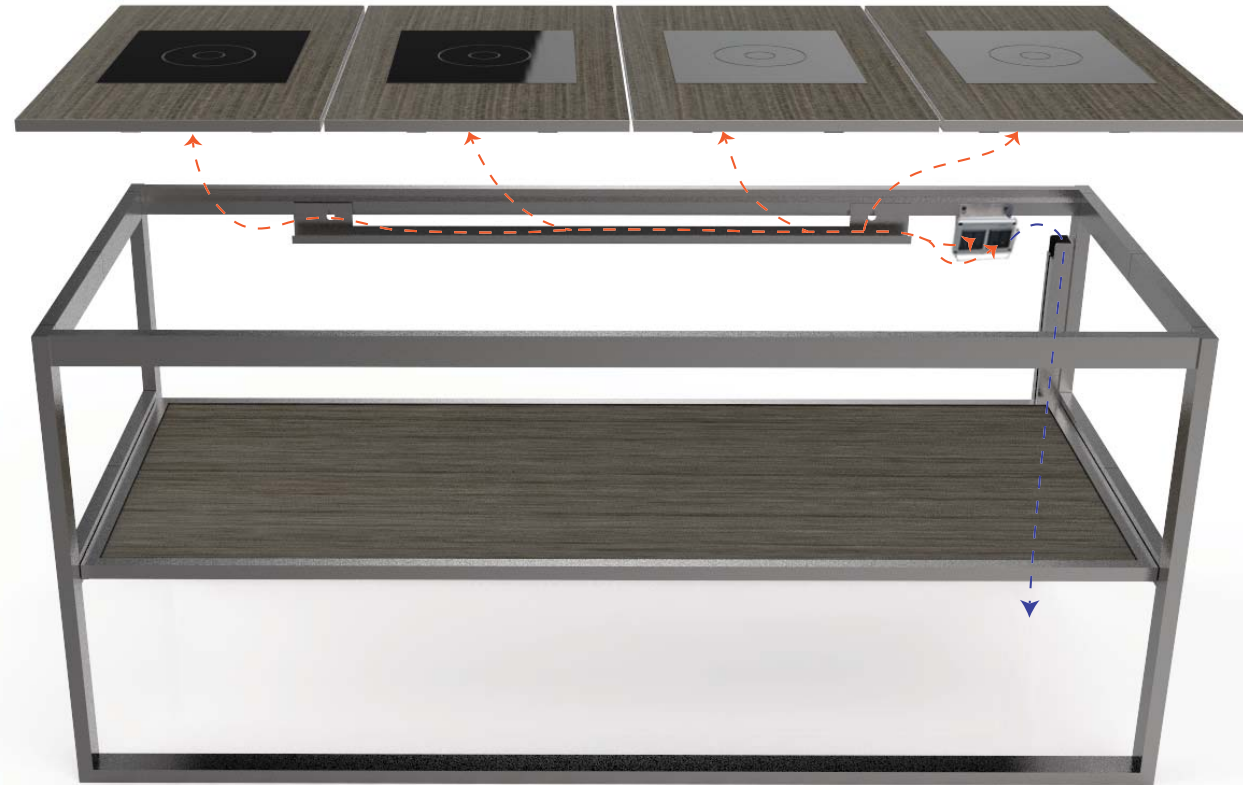
3 Sauce Containers



Hot & Cold

# Cool Cube Foldable

*cable & power management*



**Power Box**



**Power Tray**



**Cable Manager**





# Cool Cube Foldable

*buffet & live cooking stations*



Pasta & Carving



Wok & Soup



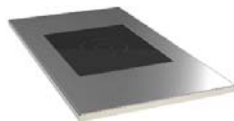
Holding & Buffet



Ice Well & Sushi



Carving



Induction Cooking



Table Top



Chef Side View



Induction Wok



Induction Cooking

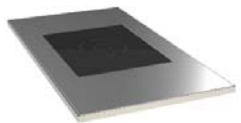


Table Top



Chef Side View





Induction Holding



Table Top



Heat Lamp Bridge



Chef Side View



Sushi Bar



Insulated Ice Well



Chef Side View



**Multi Station w/ Shelf-Riser**  
 700 x 820 x 1800H

# Multi Station *with removable Shelf-Riser*



Removable Shelf-Riser



Removable Shelves & Cutting Board from Shelf-Riser



Shelf-Riser on Multi Station





**Storage & Transport Roadcase**  
710 x 775 x 1430H







**LED Lighting**

Remote Control or App Access



**Media Table**

Front Media Screen & Perforated Side Panels



Press for 3D View (use mouse to rotate the model):

[www.ihsglobalalliance.com/xr/CoolCubeMedia/CoolCubeMedia.html](http://www.ihsglobalalliance.com/xr/CoolCubeMedia/CoolCubeMedia.html)





# Media & interactive Cool Cube

## digital & touch screen tables



Media Table



Menu



Reservations



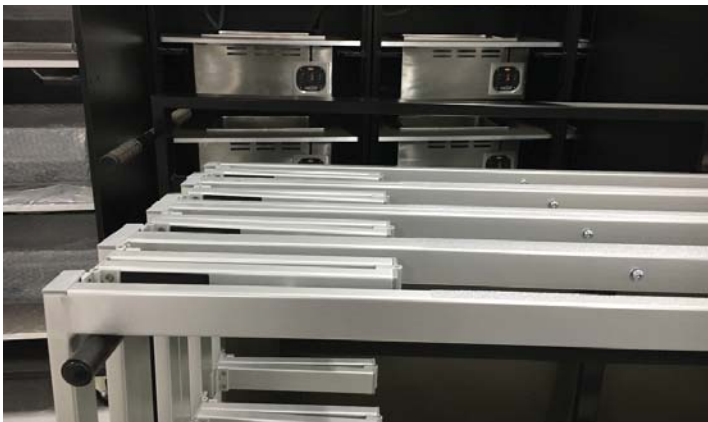
Website



Entertainment



Interactive Table



# Cool Cube Foldable

*storage & transport trucks*



**Table Transport Truck**  
Holds 4 x Frames & 4 x Table Tops



**Vinyl Cover**



# Cool Cube Foldable

*cover protection*



**Insert Transport Trolley**  
1000 x 900 x 1540H



**Vinyl Cover**

# Rollaway

banquet OVERLAY



Milkwood  
Laminate



Gold  
Baked Enamel



Stainless Steel  
Brushed

## Rollaway OVERLAY

Banquet Overlay - Oval  
2200 x 1600 x 760 H



Vertical Storage for  
Banquet Overlays



Rollaway  
600 x 1800 x 760 H



Banquet Overlay



Rollaway Overlay

## Vertical Storage





# ANZ Stadium

*Action Stations - Bar & Back Bar*



Stainless Steel  
Frame



Crystal Black  
Stone Top



Smoky Sapelle  
Laminate



*Lighting up a world of mobile entertainment.*

Exuding a residential feel with a touch of luxury, this bar and back bar set has been styled to suit the 5-Star space of the ANZ Stadium.



## *Arrowhead Stadium - Levy Restaurants*

### *The Kingdom Cocktail Cart*



Brushed  
Stainless Steel



Licorice Linea  
Laminate

*Unique roll-in beverage services, with a difference.*

This stunning beverage cart, was a result of the creative collaboration with those at Arrowhead Stadium. Handcrafted to complement a 5-Star service anywhere, anytime.





# The Peninsula Paris

## *Dim Sum Trolley*



Gold Pearl  
Baked Enamel



Oyster Linea  
Laminate



*Designed with timeless class for a unique presentation.*

A collaboration of custom design to food service, at The Peninsula Paris. The fusion of a branded palette and ornate style, complements the luxury of the brand itself.



# Multi-Purpose Trolley

George's Whisky Bar



Champagne Trolley



Martini Trolley



Chocolate Trolley



Cheese Trolley



Carving Trolley



Press for 3D Interactive View:

[www.ihsglobalalliance.com/\\_downloads/xr/MultipurposeTrolley/MultipurposeTrolley.html](http://www.ihsglobalalliance.com/_downloads/xr/MultipurposeTrolley/MultipurposeTrolley.html)

# Multi-Purpose Trolley

## George's Whisky Bar



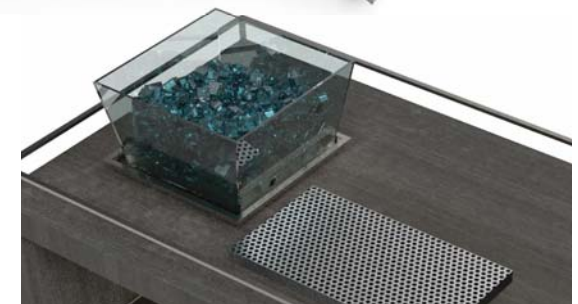
Medium Bronze  
Baked Enamel



Bronze Tinted  
Safety Glass



Smoky Sapelle  
Laminate



Acrylic Ice Well & Pouring Tray



# MGM National Harbor

*In-room Dining - The Butler*



*Bringing back 5-Star service in an intimate setting.*

The MGM team is renowned for creating unique experiences across the brand. The Butler system was chosen to revive the very experience of room service in America's Western Hemisphere.



# MGM National Harbor

## *Rollaway - Conference*



Stainless Steel  
Arch-Leg



Milano Walnut  
Laminate



*Inspiring a comfortable experience whilst exuding professional style.*

The Rollaway was chosen for its flexibility and design integrity. Our designers worked together with the MGM team, to tailor an elegant equipment solution with speed and integrity.



# MGM National Harbor

*Action Stations - Bar & Back Bar*



Turino  
Stone



Lustrous Elm  
Laminate



*Fusing traditional style with modern influence.*

Setting the perfect bar scene whilst complementing the ambience of MGM National Harbor.

# Google Food

*Cross Cube - Bar*



Stainless Steel



Milano Walnut  
Laminate



*A creative collaboration inspiring a unique mobile bar experience.*

The innovative ideas renowned by the team at Google, have styled this new mobile bar system. Its flexible configuration makes for a quaint and stylish service.





# Eden Roc, Nobu

*Cool Cube - Live cooking*



Stainless Steel



Oyster Linea



*Presenting a live cooking experience with the Cool Cube.*

Simple, elegant and functional. These mobile stations reflect the stunning interiors of Eden Roc Nobu and its extended services.



# Four Seasons Ten Trinity Square, London

*Deco Cube - Buffet*



Chestnut  
Digital Timber



Crystal Brass  
Recessed Trim



Milano Walnut  
Laminate



*Exuding luxury and creativity with our Deco Cube.*

The fusion of wood and brass finishes make for a truly unique presentation.  
Its design integrity offers a timeless piece across service and space.



# Four Seasons O'ahu, Ko Olina

*Action Stations - Bar & Back Bar*



Luna White  
Stone Top



Tawny Linewood  
Laminate



*A mobile bar experience with a difference.*

Staying true in creating a new kind of function space, Four Seasons O'ahu, Ko Olina, fuses new styles into their bar service to compliment their luxurious surroundings.





# Four Seasons Tunisia

*Cool Cube - Live Cooking*



Silver Metallic Gloss  
Baked Enamel



Oyster Linea  
Laminate



*Enhancing the lively restaurant atmosphere at Tunisia, with the Cool Cube.*

Imagined, defined and designed together with the team at IHS. The Cool Cube stations were crafted to service dedicated needs, with the flexibility of a classic finish.



# Four Seasons Kuwait, Burj Alshaya

*Action Stations Swap Top - Live Cooking*



Barrister White  
Baked Enamel Casing



Euro Marble Matt  
Stone Top



Licorice Linea  
Laminate



*Renowned for presentations that exceed expectations.*

The Swap Top was chosen to compliment the creative and opulent services offered at Four Seasons Burj Alshaya. Its ability to interchange services creates dynamic presentations across the establishment.





ihs  
GLOBAL ALLIANCE



# Four Seasons New York Downtown

*Action Stations - Coffee Station*



New Diamond  
White Stone



Espresso Ligna  
Laminate



*Extending a mobile service with class and integrity.*

Customized to service the unique presentation style of Four Seasons Downtown. This Action Station evolved from a creative collaboration and dedication to detail.



# Four Seasons Tianjin

*Cool Cube - Live Cooking*



Stainless Steel



Nocture Oak  
Laminate



*The Cool Cube ice-cream bar presents dessert delight with a difference.*

Staying with a classic yet opulent theme, Four Seasons Tianjin worked with IHS to deliver a unique dessert experience. Bringing the ice-cream bar to their guests, with style and elegance.





ihg  
GLOBAL ALLIANCE

# Four Seasons Beverly Wilshire

*In-room Dining Trolley*



Licorice Linea  
Laminate



*Bringing back class to an intimate service setting.*

Collaborating with the dynamic Four Seasons team, a new style in In-room Dining service was born. This unique service trolley was customized to exude the class and sophisticated service of Four Seasons Beverly Wilshire.



# Mina A'salam Madinat Jumeirah

*Cross Cube - Buffet*



Gold Pearl  
Baked Enamel



Black Painted  
Glass



*Designed to complement the luxurious service across this iconic hotel.*

Fine finishes have been fused with the elegance of a curved leg style. This Cross Cube set has been tailored to deliver presentation and service with elegance and distinction.





# Ritz Carlton Jeddah

*Cross Cube - Buffet*



Gold Pearl  
Baked Enamel



Black Glass  
Table Top



*A new sense of luxury in buffet presentations.*

Its sleek style and opulent finishes, presents the Cross Cube as the perfect complement, to the style and service, of Ritz Carlton Jeddah.



# Conrad Fort Lauderdale

*Action Stations - Bar & Back Bar*



Stainless Steel



Milano Walnut



*Beverage service with a touch of luxury.*

The high-end style of Conrad Fort Lauderdale matched with a residential elegance of a natural finish. These stations were tailored to exude a 5-Star presentation.





# Waldorf Astoria Chicago

*Bar & Back Bar*



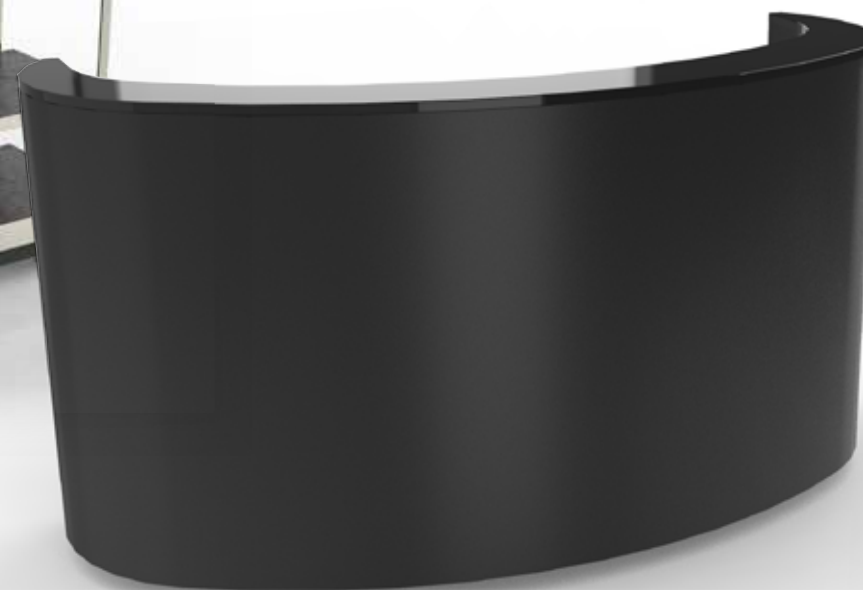
Brushed  
Stainless Steel



Crystal Black  
Stone



Black  
Laminate



*Sleek and sophisticated beverage service at the Waldorf Astoria Chicago.*

Modern architecture in an elegant sense of place. Tailored with contemporary edges and high end finishes, these presentations are all class.





# Hilton Sydney

*Chic Cube - All-event tables*



Stainless Steel



Statuario Quartz



Milano Walnut



*Designed to service presentations across the iconic precinct.*

The Chic Cube was tailored with a combination of contrasting finishes for a flexible brand experience. The addition of sleek castors made for a truly mobile showcase.



# Hilton Colombo

*Custom Classic Cube - buffet*



Brushed  
Stainless Steel



Fossil  
Laminate



*A nested presentation buffet of class and sophistication.*

This curved set is styled with soft tones and elegant curves to compliment the richly decorated interiors of Hilton Colombo.





# Hilton Adelaide

*Rollaway - Conference & Banquet*



Chrome  
H-Leg



Wenge  
Laminate



*An elegant linen-free solution exuding style and simplicity.*

Complimenting the modern and creative space of Hilton Adelaide, the Rollaway banquet blends in for a seamless brand experience.





# Hilton Makkah Convention Hotel

*Action Stations - Live Cooking & Buffet*



Stainless Steel  
Trimming



Crystal Black  
Stone



Wenge  
Laminate



*A sleek solution to a mobile presentation service*

Complimenting the luxurious interiors of Hilton Makkah, this mobile action station serves up as the solution of choice.



# JW Mumbai

## Action Stations - Back Bar



High Polished  
Stainless Steel



Milkwood  
Laminate



*Architecturally designed presentation cubes setting the scene in Mumbai.*

Designed to reflect the stunning style of JW Mumbai. The Chic Cube back bar was tailored to compliment the luxurious architecture and set an unprecedented presentation.





# Marriott Al Forsan, Abu Dhabi

*Action Stations - Live Cooking & Buffet*



Stainless Steel  
Trim



Crystal Black  
Stone



Tawny Linewood  
Laminate



*Expanding a live cooking service with ease... and style.*

Imagined, defined and designed together with the team at IHS. The Cool Cube stations were crafted to service dedicated needs, with the flexibility of a modern and timeless finish.





# Ritz Carlton Singapore

*Xilo - Meeting*



Wenge Veneer



*A contemporary and stylish collaboration. The first of its kind.*

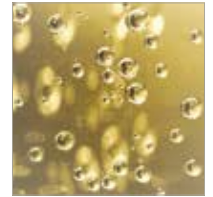
The Xilo solution presents a timber-veneer design, complementing the modern and residential style of the Ritz Carlton Singapore. Offering a 6-Star Green rating in an environmentally conscious world.

# Ritz Carlton Hong Kong

## Cross Cube - Cocktail



Black Satin  
Baked Enamel



Champagne Bubbles  
Digital Glass



*Fusing stylish curves with digital technology, at the Ritz Carlton Hong Kong.*

Seeking a tailored and unique approach to cocktail setup, IHS designers applied an innovative digital approach to image application, for a truly unique presentation piece.





## Edition Sanya

*Cool Cube - Buffet*



Stainless Steel



Clear Glass



Milkwood



*Simple, elegant and complimentary presentation pieces.*

Tailored with a residential finish, this Cool Cube presentation set exudes warmth and class. Chosen for its multi-use flexibility and ease of use, delivering a stylish service across the establishment.





# Andaz Scottsdale Resort & Spa

*Xilo - Meeting*



Milkwood  
Veneer



*A residential and stylish collaboration. The first of its kind.*

The Xilo solution was born from the collaboration with IHS. The desire to present a timber-veneer design, complementing the modern and residential style of the Andaz brand.



# Grand Hyatt Doha

*Action Stations - Buffet & Live Cooking*



Crystal Blast  
Stone



Black  
Laminate



*A contemporary and stylish presentation.*

The elegant combination of stone and laminate finishes, complements its ornate surroundings. Its subtle style makes for an exceptional mobile service.





# Grand Hyatt Manila

*Rollaway - Conference*



Stainless Steel  
Frame/Leg



Ebony Macassar  
Laminate Top



*Simplicity and elegance for a sophisticated meeting experience.*

Tailored to complement the interior the Grand Hyatt Manila, the style and finish of the Rollaway conference table, presented an exceptional choice.



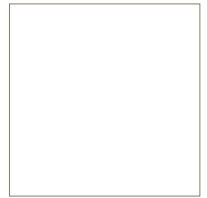


# Pullman Sydney Airport

*T-fold - Conference*



Brushed Stainless  
Steel



White  
Glass



*Offering a sense of style and comfortability in business.*

The Rollaway was chosen to compliment the style and the contemporary interior design. It's design integrity and fused stylish finishes offer versatility in service.

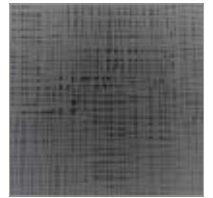


# Hyatt Regency Boston

*Classic Cube - Buffet*



Stainless Steel  
Frame



Acrylic Black  
Impressions Top



*Simple and elegant for any presentation experience.*

Tailored to complement the striking interior of Hyatt Regency Boston.  
The combination of textured tops and steel finishes make for a timeless presentation.



# Fairmont Vancouver Airport

*Cool Cube - Bar*



Stainless Steel



Ebony Macassar



*Delivering a new sense of luxury in beverage service.*

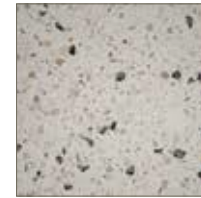
Its sleek style combined with complementary finishes, presents the Cool Cube to Fairmont Vancouver. A functional system tailoring a branded service.





# Fairmont Austin

*Action Stations - Bar & Back Bar*



Everest  
Stone



Smoky Sapelle  
Laminate

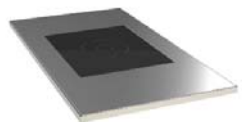


*A sleek beverage solution for the elegance of Fairmont Austin.*

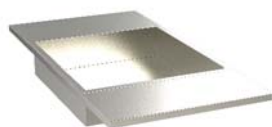
A modern approach to a mobile bar solution. Blending Stone and Laminate finishes for a touch of class and timeless presentation.



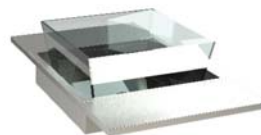
Interchangeable Table



Induction Cooking



Insulated ice well



Acrylic Ice Well



3 Sauce Containers



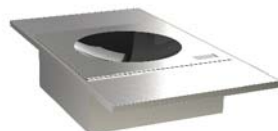
Lava Grill



Carving



Teppanyaki



Induction Wok



4 Beverage Holders



Cable Entry

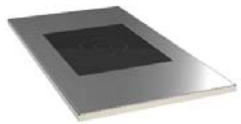


Induction Holding

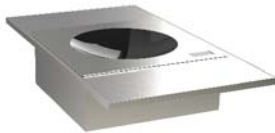


Hot & Cold Plate





Induction Cooking



Induction Wok



Lava Grill



Carving

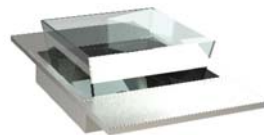


Top View





Fridge Station



Acrylic Ice Well



Laminate Tabletop



Top View



# Cross Cube SET TOP buffet - Level 2



Stainless Steel  
 Frame/Legs



Black Glass  
 Tabletop





## Cross Cube CORNER TOP

buffet - The Deck



Mannex Black  
Baked Enamel



Basalt Grey  
Porcelain



Reversible Table Tops





## The Butler

### VIP service module



Dessert service



Coffee service



Bar service

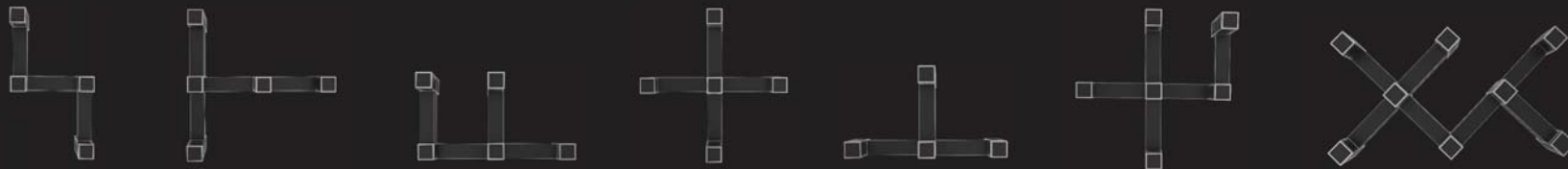


Champagne service

# Rack Cube



Cater without restriction... Individualize to fuse with your interiors.



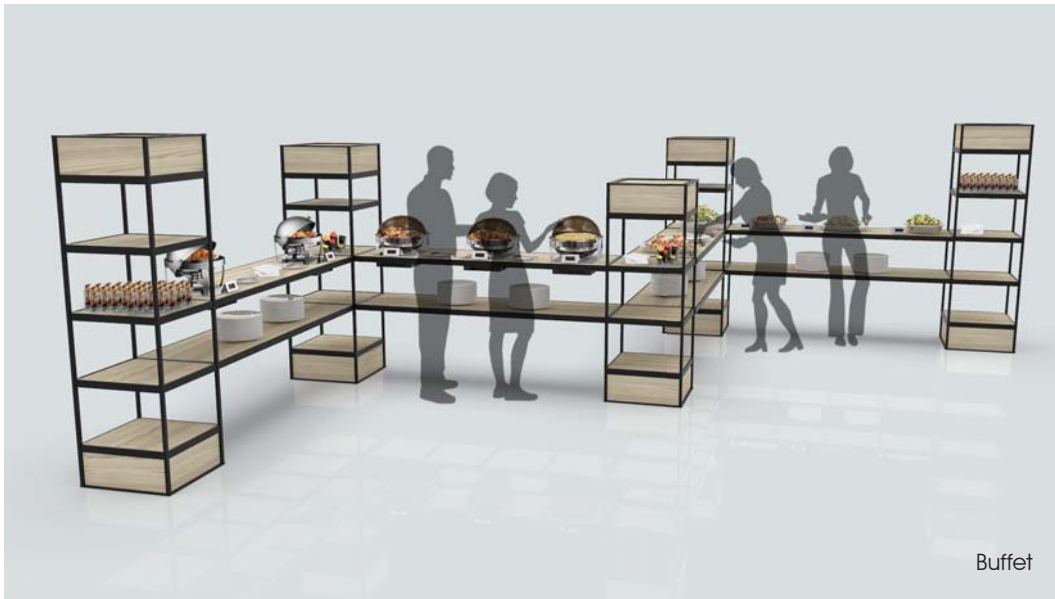
# Rack Cube



Coffee Break



Live Cooking



Buffet



Cocktail

*From Beverage to Buffet, to Live Cooking...*



# Rack Cube

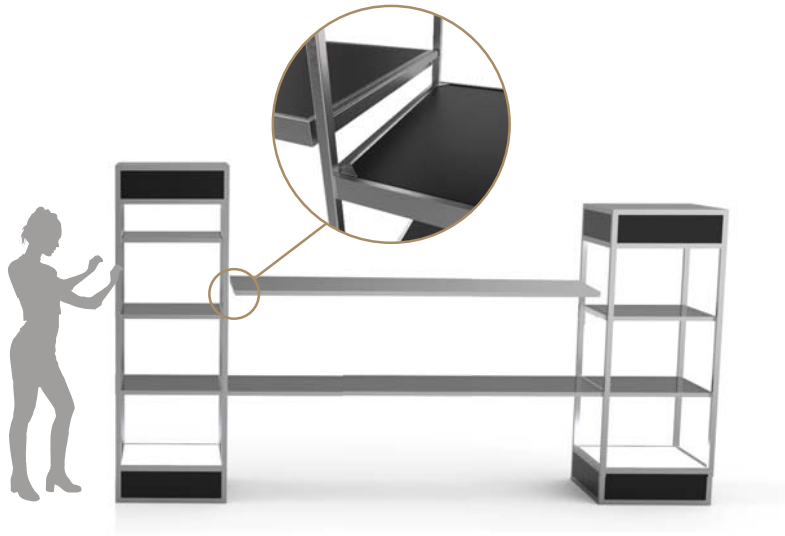
modular food & beverage system



**Towers**  
Large - Medium - Small



**Detachable Shelves**  
Plain or with Appliances



Simply clip Shelves into each Tower

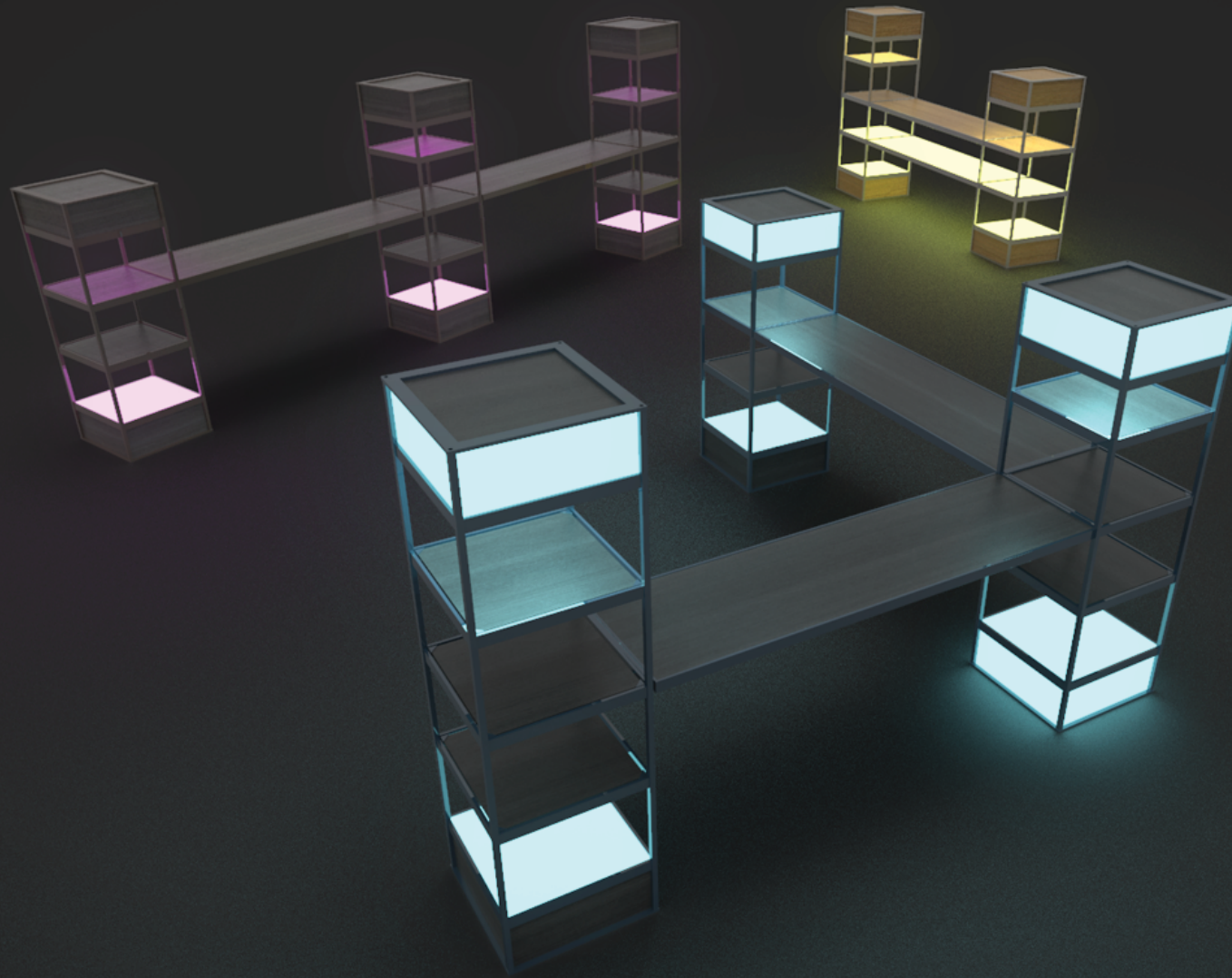


**Caddy Truck**  
Holds 3 Towers & 5 Shelves

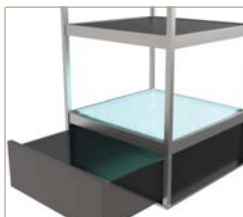


# Rack Cube

## Light Box



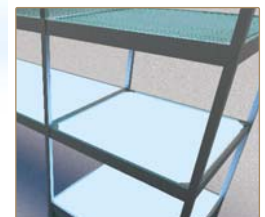
**Directed Lighting**  
Top Panel Illuminated  
Storage Drawer /Acrylic



**Ambient Lighting**  
All Panels Illuminated  
Acrylic



**Shelf Lighting**  
Tower & Full Shelves Illuminated  
Acrylic / Onyx



# Chic Cube

all-event tables



Enjoy the *wide variety of usage* these fine tables offer





# Chic Cube

live cooking & beverage service



# Deco Cube

all-event tables



Wok



Teppanyaki



Prep Insert



Sauce Containers



Lava Grill



Cable Entry



Ice Well



Induction Cooking



Gastronorm



Hot & Cold Induction



Chopping Board &  
Heat Lamp

Modular inserts for greater *flexibility*



## Back Bars





## Custom projects

VIP Trolley & Serving Tray, Tiger Resort



*Open View*



*Closed View*

